

MOBILE INTERIM 114L SELF-CONTAINED SAFETY SHOWER AND EYE WASH

H-STD40K45G

An essential addition to sites where a stationary safety shower and eye wash is unsuitable, for stand-by use in locations where no water supply is available, or when existing safety showers are undergoing maintenance.

Designed to supplement permanent plumbed-in models, the 114 litre unit is easy to manoeuvre as the location of the hazard changes during a project. This unheated model incorporates a polypropylene lined cylinder, heavy duty powder coated stainless steel frame and large pneumatic tyres to aid mobility.

Options:

- Insulated jacket for frost protection (H-STD40K45G)
- Heated jacket to prevent water within the tank freezing (H-STD40K45G)
- Handheld eye, face and body shower



DECONTAMINATION SHOWERS

12 or 16 nozzle portable decontamination shower	
Item Code	Description
H-30012E	12 nozzle portable decontamination shower
H-30016E	16 nozzle portable decontamination shower

A 12 or 16 nozzle portable decontamination shower designed to be both lightweight and robust. Ideal for use by Civil and Military Fire Services, Chemical and Petrochemical Industries, Armed Services and Civil Defence Units, the unit can be quickly deployed in cases of major chemical, biological and nuclear incident in less than a minute.

The 11" lay-flat Red Dura-line hoses form four shower legs, each of which is fitted with four spray nozzles. Once erected and coupled to a free appliance, water is admitted to the apparatus and the hoses become rigid under pressure, adopting a curved form to give 360° decontamination. The rugged carrying case duals as an effective base platform, the design of which is a lay-flat host assembly, complete with non-slip raised platform.



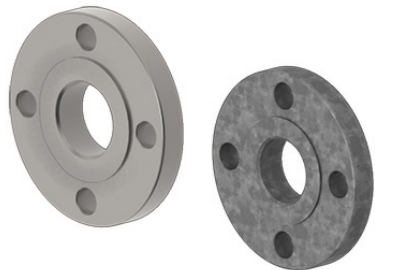
ACCESSORIES FOR PREMIUM RANGE OF SAFETY SHOWERS AND EYEWASH EQUIPMENT

PREMIUM RANGE ACCESSORIES

ACCESSORIES AND EYEWASH EQUIPMENT	
Item Code	Description
H-TFC-G	G RANGE FOOT TREADLE FOR PREMIUM EYEWASH
H-KTFC	K RANGE FOOT TREADLE FOR SELF-DRAINING EYEWASH



Item Code	Description
H-SD05010	1 INCH 316L/GALV ANSI/ASME/PN 150LB RAISED/FLAT FACE FLANGE AT WATER INLET/OUTLET
H-SD05030	1-1/4 INCH 316L/GALV ANSI/ASME 150LB RAISED/FLAT FACE FLANGE AT WATER INLET/OUTLET
H-SD05040	1-1/2 INCH 316L/GALV ANSI/ASME 150LB RAISED/FLAT FACE FLANGE AT WATER INLET/OUTLET
H-SD05050	2 INCH 316L/GALV ANSI/ASME 150LB RAISED/FLAT FACE FLANGE AT WATER INLET/OUTLET



Other Sizes are available on request

Item Code	Description
H-VL60001	1/2 INCH BSP FEMALE 316 STAINLESS STEEL SCALD PROTECTION VALVE SP68-100 - VALVE FULLY OPEN AT 38 DEG C, FULLY CLOSED AT 32 DEG C
H-VL60013	1/2 INCH BSP FEMALE 316 STAINLESS STEEL SCALD PROTECTION VALVE SP68-95 - VALVE FULLY OPEN AT 35 DEG C, FULLY CLOSED AT 29 DEG C



Other sizes and Temperature parameters available on request

Item Code	Description
H-EC35147	1-1/4 Inch Bsp Euroswitch 316 Stainless Steel With Terminal Box With M20 Cable Entry, Spdt With 1 Nc & 1No Volt-Free Contacts
H-STD22KS-SS316	Low Inrush Proximity Switch, 24VDC, Suitable For Zone Suitable For Non-Flameproof Areas
H-STD22KS(2ND)-SS316	Low Inrush 2nd Proximity Switch, 24VDC Complete With Brackets Suitable For Non-Flameproof Areas
H-STD22KSZ12-SS316	Low Inrush Proximity Switch, 24VDC, Suitable For Zone 1 & 2 Areas Gas Groups 11a And 11b
H-STD22KS(2ND)Z12-SS316	Low Inrush 2nd Proximity Switch, 24VDC Complete With Brackets. Suitable For Zone 1 & 2 Areas Gas Groups 11a And 11b
H-STD22K	Brass Nickel Plated Low Inrush Proximity Switch, 24VDC, Suitable For Zone Suitable For Non-Flameproof Areas
H-STD22K(2ND)	Brass Nickel Plated Low Inrush 2nd Proximity Switch, 24VDC Complete With Brackets Suitable For Non-Flameproof Areas
H-STD22KZ12	Brass Nickel Plated Low Inrush Proximity Switch, 24VDC, Suitable For Zone 1 & 2 Areas Gas Groups 11a And 11b
H-STD22K(2ND)Z12	Brass Nickel Plated Low Inrush 2nd Proximity Switch, 24VDC Complete With Brackets Suitable For Zone 1 & 2 Areas Gas Groups 11a And 11b



Other Configurations are available on request