

DRUM PALLETISER TRUCK

S-SMDPT



The drum palletiser truck reduces operator strain and removes the man-handling of drums when loading/unloading drums and barrels from pallets.

Suitable for all standard-sized drums and barrels, this piece of equipment will save you time and prevent any accidents on-site. The unit is fitted with stabilising wheels at the rear for easy manoeuvrability. Manually moving drums and barrels has never been more easy and straightforward.

SPECIFICATION:

- Designed for loading and unloading 210-litre drums and barrels onto pallets or platforms
- Solid plastic wheels for ease of maintenance
- Welded steel construction
- High-quality powder-coated finish
- Supplied with a Declaration of Conformity

KEY FEATURES:

- Used for loading/unloading drums and barrels
- Hinged clamp attachment for use with plastic drums supplied separately
- Auto clamp positively locks on the drum rim

ADVANTAGES:

- Reduces operator strain by up to 100%
- Stops man-handling of drums and barrels when loading/unloading pallets

CERTIFICATION:

- Supplied with Declaration of Conformity to all relevant standards

SPECIFICATIONS

Drum Palletiser Truck, welded steel construction with Solid plastic wheels, 250KG Capacity, for Loading and unloading 200-209L Plastic/Steel Drums

Item Code	Dimensions	Weight kg
S-SMDPT	610mm(L) x 1660mm(W) x 1100mm(H)	29kg
250KG CAPACITY	Shipping Dimensions	Packing Weight kg
	800mm(L) x 1660mm(W) x 1250mm(H)	34kg

IBC TIPPER

S-SMIBCT



The IBC Tipper is a mechanism to maximise the dispensing of your IBC while avoiding waste, environmental and safety hazards.

It can also be customised for use with steel barrels and plastic drums. It works by tilting the IBC as its contents are used, thereby increasing pressure at the tap and allowing more liquid to flow out. This can prevent significant financial losses when pouring valuable liquids.

SPECIFICATION:

- Designed for standard IBCs: 1000mm x 1200mm
- Maximise the dispensing of your IBC or drum
- Supplied with a Declaration of Conformity

KEY FEATURES:

- Can be used for IBC units, plastic drums or steel barrels using relevant attachments
- Pressure increases as the tipper angle increases ensuring all contents are removed
- Castors can be added to make the unit portable

ADVANTAGES:

- Self-emptying using spring-loaded mechanism
- Avoid waste, environmental and safety hazards
- Get the most out of your IBC or drum
- Maintenance-free

CERTIFICATION:

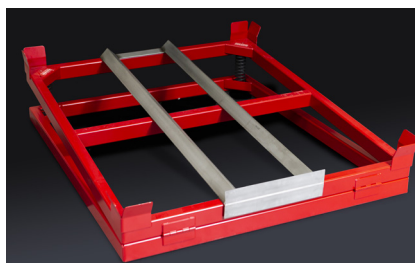
- Supplied with Declaration of Conformity to all relevant standards



SPECIFICATIONS

IBC Tipper Unit, Welded Construction, Self Emptying Spring-Loaded Mechanism, Tiling 135 degrees to maximise the dispensing of liquid from IBC

Item Code	Dimensions	Weight kg
S-SMIBCT	1210mm(L) x 1010mm(W) x 325mm(H)	42kg
	Shipping Dimensions	Packing Weight kg
	1251mm(L) x 1050mm(W) x 350mm(H)	47kg



S-SMIBCT-D

IBC Tipper Drum attachment to allow usage of 200-209L Plastic/Steel Drums



S-SMIBCTC

IBC Tipper Castor Wheels (Set of 4) - For retrofitting to IBC Tipper

HEAVY-DUTY SCAFFOLD TUBE TRANSPORTER

S-SMSTT



Avoid injury and improve efficiency on your worksite with our scaffold pole transporter. A robust design Makes light work of up to 800kg in one load.

This unit benefits from front and rear castors and large solid rubber wheels for added stability, and requires very little effort to manoeuvre – even across uneven ground. Rubber top plates also minimise the risk of pole slippage.

SPECIFICATION:

- 800kg maximum capacity
- Two front and rear stability castors
- Powder-coated paint finish



KEY FEATURES:

- Heavy-duty solid rubber tyres
- Rubber top plates to prevent slippage
- Manufactured in Britain

ADVANTAGES:

- Compatible with most scaffolding applications
- Requires very little effort to manoeuvre

CERTIFICATION:

- Supplied with Declaration of Conformity to all relevant standards

SPECIFICATIONS

Heavy Duty Scaffold Tube Transporter, 800KG Capacity, 1310 (L)X 700(W) X 680(H) MM - 55KG - Powder coated Red With Rubber top plates



Item Code	Dimensions	Weight kg
S-SMSTT	1310mm(L) x 700mm(W) x 680mm(H)	55kg
800KG CAPACITY	Shipping Dimensions	Packing Weight kg
	1360mm(L) x 800mm(W) x 820mm(H)	65kg



CONFINED SPACE ENTRY BARRIER MANWAY

S-SMMAB



Our confined space entry barriers are designed to physically prevent unauthorised access to manway holes and vertical ladders.

The telescopic design makes this product suitable for multiple-sized applications. The stickers can be written on with a white board or permanent marker to suit your requirements.

SPECIFICATION:

- Telescopic design
- Customisable sticker
- Heavy-duty lock to prevent access
- Supplied with a Declaration of Conformity

KEY FEATURES:

- Designed to physically prevent unauthorised access
- Easily use white board markers to add special information

ADVANTAGES:

- Telescopic design to suit multiple-sized applications
- Supplied with heavy-duty push lock and two keys
- Powder-coated finish

CERTIFICATION:

- Supplied with Declaration of Conformity to all relevant standards



SPECIFICATIONS

Confined Space Entry Barrier - Manway - Telescopic Designed for multiple-sized application to prevent unauthorised access to manway holes



Item Code	Dimensions	Weight kg
S-SMMAB	600mm(L) x 500mm(W) x 200mm(H)	5kg
	Shipping Dimensions	Packing Weight kg
	250mm(L) x 620mm(W) x 520mm(H)	6kg



IBC LIFTING FRAME

S-SMIBCLF

Our IBC lifting frame has been specifically designed to remove dangerous lifts of IBC containers onshore and offshore.

Made in-house, our frame has been constructed to the highest standards using the best materials on offer. Not to be confused with similar products, this product has been tried and tested using real life scenarios both onshore and offshore.



SPECIFICATION:

- Supplied flat-packed
- Easy to assemble in minimal time
- Supplied with a Declaration of Conformity

KEY FEATURES:

- Safe transfer and restraint of IBC containers
- Modular design for easy transfer between sites
- Design compensates for C of G differences
- Modular assembly allows for replacement of individual components
- Compact design allows for easy storage
- Safe use instructions provided

ADVANTAGES:

- Easy to assemble and use
- Design eliminates potential sideways slippage of IBC container

CERTIFICATION:

- Supplied with Declaration of Conformity to all relevant standards



SPECIFICATIONS

Modular IBC Lifting Frame for Safe Transfer / Restraint / Lifting of IBC Containers Onshore and Offshore 2000kg Lift Capacity

Item Code	Dimensions	Weight kg
S-SMIBCLF	1170mm(L) x 865mm(W) x 1780mm(H)	80kg
2000KG CAPACITY	Shipping Dimensions	Packing Weight kg
	1230mm(L) x 800mm(W) x 300mm(H)	85kg



ALUMINIUM CONTAINER ACCESS STILE

S-SMACAS



Cost-effective and lightweight step for accessing half-height baskets.

This unique adjustable ladder has a 150kg capacity and is suitable for accessing all low-level half-height containers, baskets and skips. Being of aluminium construction, this ladder can be used in any environment without the risk of rust or corrosion.

SPECIFICATION:

- Suitable for all containers with 75mm to 190mm-wide top section rail
- Lightweight aluminium easily lifted and used by one person
- Two hand-operated adjusters are screwed onto the top rail section of the basket or half-height, to provide a secure lock for the ladder

KEY FEATURES:

- One-piece access/egress solution for safely getting in and out of half-height containers, baskets & skips
- Suitable for most types of half-height containers
- Checkered material on step for maximum grip
- Handle on left side for use when in operation
- Easily adjusted threaded securing tighteners, to minimise movement during use

ADVANTAGES:

- Lightweight aluminium construction
- Easily lifted by one person

CERTIFICATION:

- Supplied with Declaration of Conformity to all relevant standards



SPECIFICATIONS

Half-height Container Access Stile - Min/Max Top Mounting Rail Size 75mm/190mm - Material: Aluminium

Item Code	Dimensions	Weight kg
S-SMACAS	440mm(L) x 485mm(W) x 930mm(H) (810mm high without handle)	12kg
150KG CAPACITY	Shipping Dimensions	Packing Weight kg
	950mm(L) x 500mm(W) x 450mm(H)	20kg

